


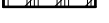
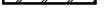




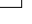
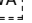
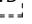

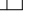



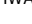
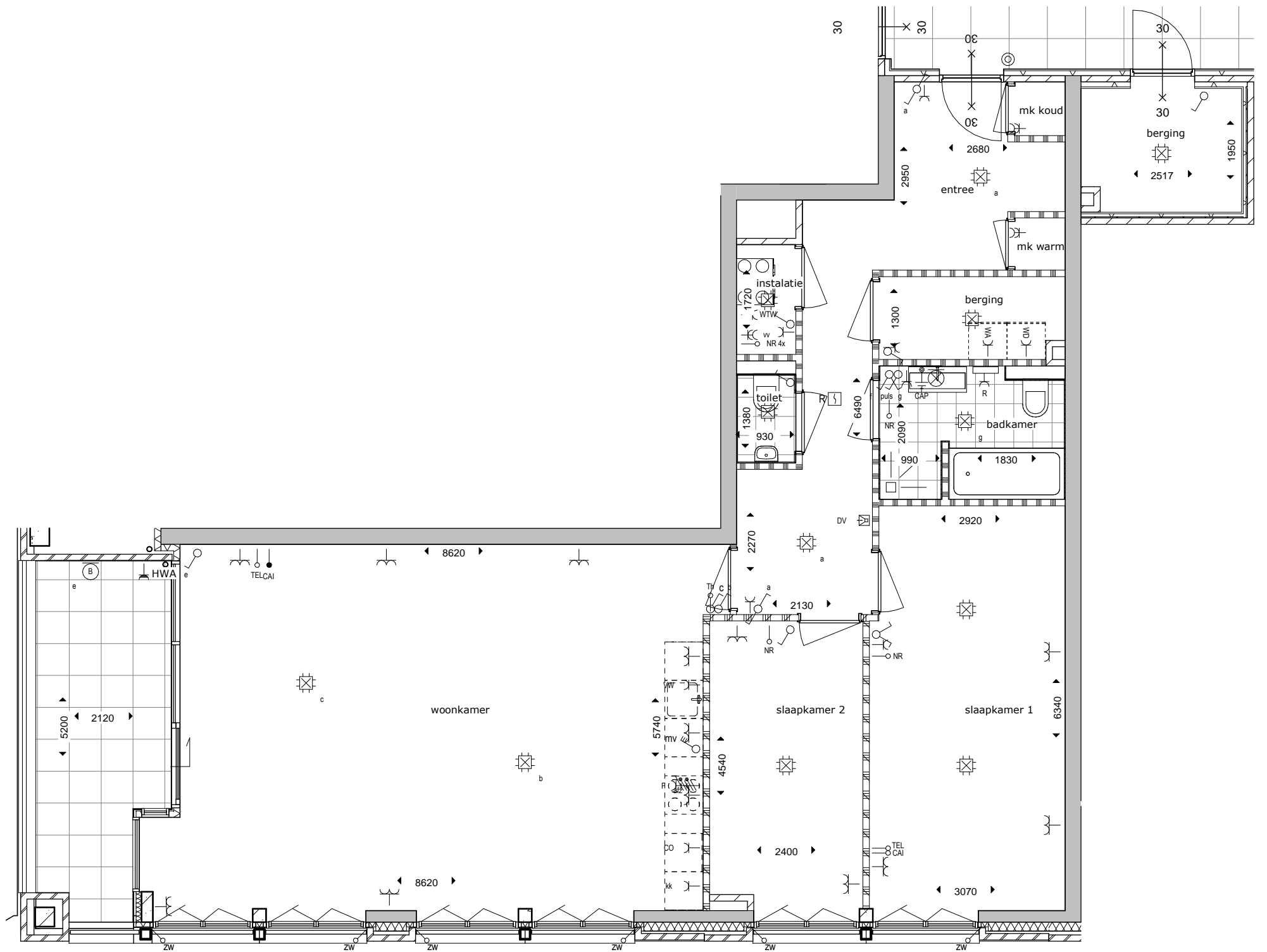
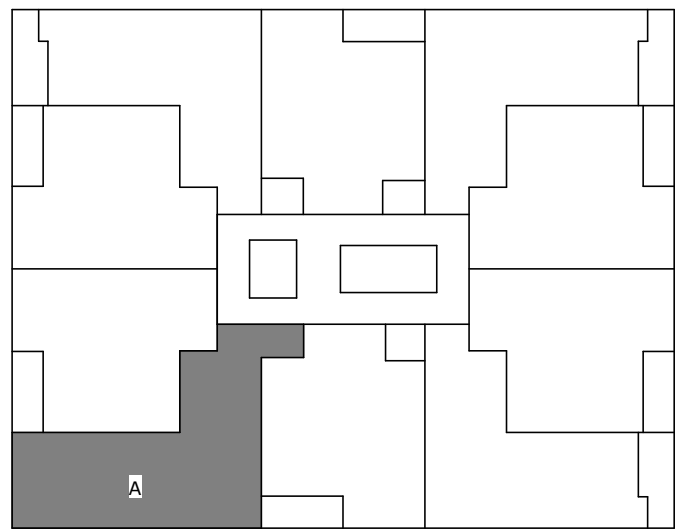


Renvooi:

-  Betonwand
-  Kalkzandsteen
-  Ythong
-  Ythong zwaar
-  Schoon metselwerk
-  Schoon metselwerk verspringend
-  Isolatie
-  Metal stud voorzetwand
-  Douche putje 150x150
-  Elektrische radiator
-  Wasautomaat
-  Wasdroger
-  Vloerverwarmings verdeler
-  Tegelvloer
-  Draai raam/deur
-  Draai-kiep raam
-  onderdeel met 30 minuten weerstand tegen branddoorslag en brandoverslag (WBDBO)
-  hemelwaterafvoer



Appartement Type A(07)



Bouwbedrijven Jongen BV
 Landgraaf: Humpertweg 34, 6371 CX
 Venlo: Noorderpoort 101, 5916 PJ
 Postbus 31007, 6370 AA LANDGAAF
 Telefoon: +31 (0)88 186 12 00
 www.bouwbedrijvenjongen.nl

**DEFINITIEF
 VOOR VERKOOP**

Accoord
 D.D. 12-10-2018



**Koningswinkelstraat 3
 6301 WH Valkenburg**
 T +31(0)43 - 601 36 37
 F +31(0)43 - 601 54 85
 @ info@paltebv.nl
 I www.paltebv.nl

Werk:
 Sphinx Zuid Maastricht

Onderdeel:
 Appartement A begane grond (07)

Get. : T.Moulen
Gec. : D.Loo
Goedg.:

Projectno.:
 470266

Blad:
 B7_VK013

Wijziging:
 C
 12-10-2018

Datum : 31-08-2018
Schaal : 1 : 75
Formaat: A3