
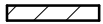

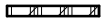



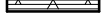


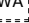
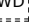

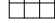


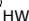
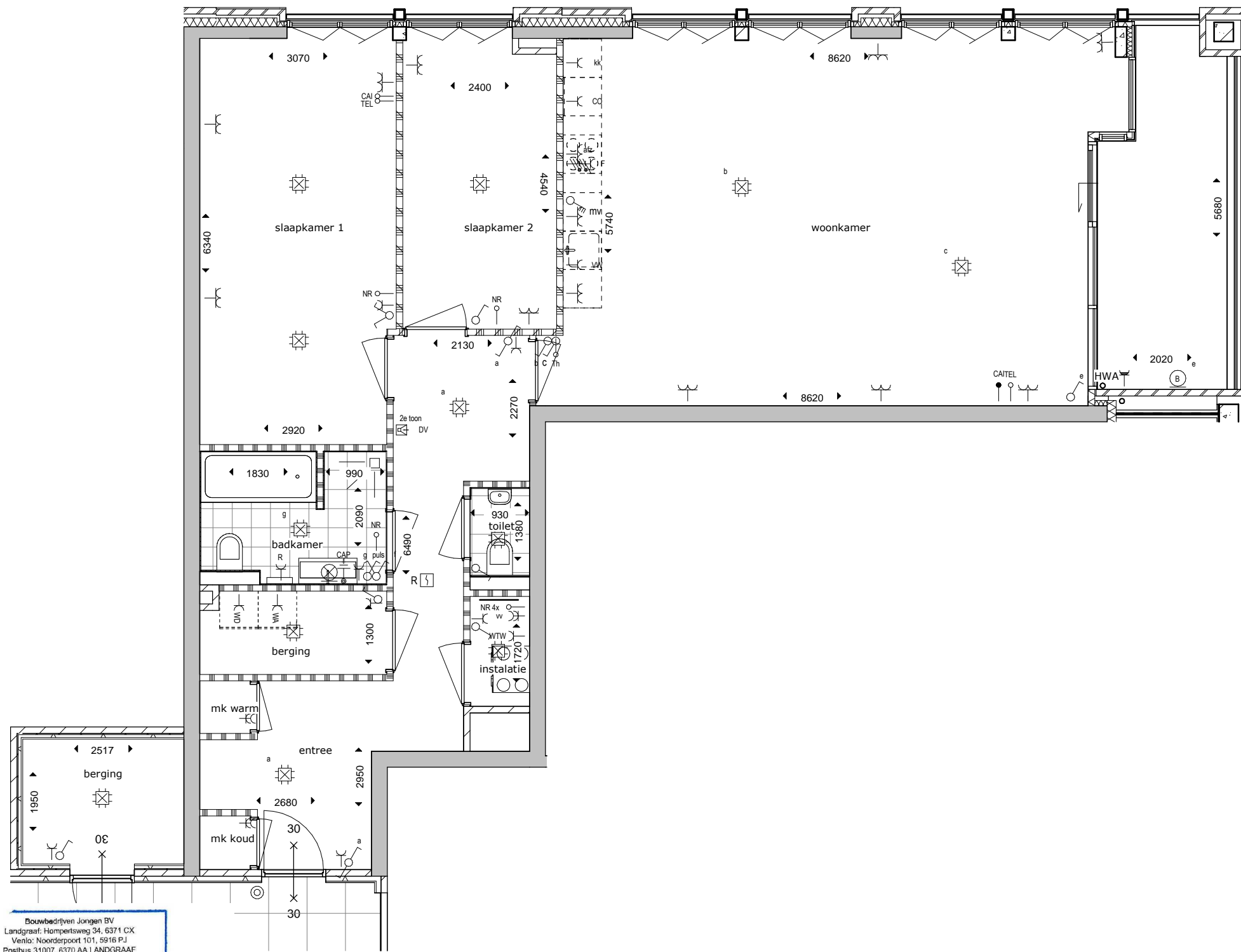
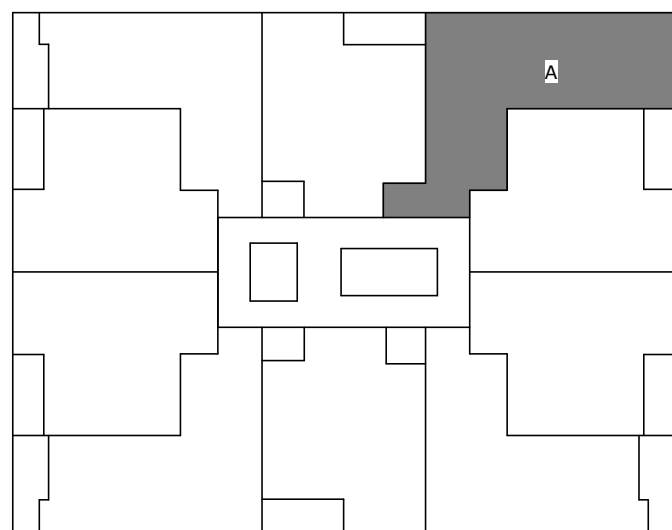


Renvooi:

-  Betonwand
-  Kalkzandsteen
-  Ythong
-  Ythong zwaar
-  Schoon metselwerk
-  Schoon metselwerk verspringend
-  Isolatie
-  Metal stud voorzetwand
-  Douche putje 150x150
-  Elektrische radiator
-  Wasautomaat
-  Wasdroger
-  Vloerverwarmings verdeler
-  Tegelvloer
-  Draai raam/deur
-  Draai-kiep raam
-  onderdeel met 30 minuten weerstand tegen branddoorslag en brandoverslag (WBDBO)
-  hemelwaterafvoer

Appartement Type A(12/22/32)



Bouwbedrijven Jongen BV
 Landgraaf: Humpertweg 34, 6371 CX
 Venlo: Noorderpoort 101, 5916 PJ
 Postbus 31007, 6370 AA LANDGRAAF
 Telefoon: +31 (0)88 186 12 00
 www.bouwbedrijvenjongen.nl

**DEFINITIEF
 VOOR VERKOOP**

Accoord
 D.D. 12-10-2018



Koningswinkelstraat 3
6301 WH Valkenburg
T +31(0)43 - 601 36 37
F +31(0)43 - 601 54 85
@ info@paltebv.nl
I www.paltebv.nl

Werk:
Sphinx Zuid Maastricht

Onderdeel:
Appartement A 1ste,2de,3de verdieping (12/22/32)

Get. : T.Moulen
 Gec. : D.Loo
 Goedg.:

Projectno.:
470266

Blad:
B7_VK021

Wijziging: **C**
 12-10-2018

Datum : 31-08-2018
 Schaal : 1 : 75
 Formaat: A3