
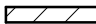





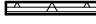


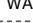
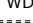
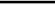
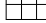


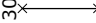
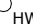
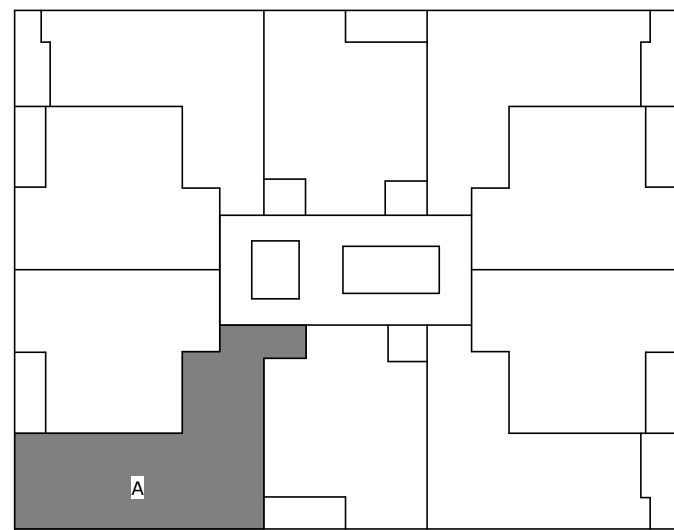


**Renvooi:**

-  Betonwand
-  Kalkzandsteen
-  Ythong
-  Ythong zwaar
-  Schoon metselwerk
-  Schoon metselwerk verspringend
-  Isolatie
-  Metal stud voorzetwand
-  Douche putje 150x150
-  Elektrische radiator
-  Wasautomaat
-  Wasdroger
-  Vloerverwarmings verdeler
-  Tegelvloer
-  Draai raam/deur
-  Draai-kiép raam
-  onderdeel met 30 minuten weerstand tegen branddoorslag en brandoverslag (WBDBO)
-  hemelwaterafvoer

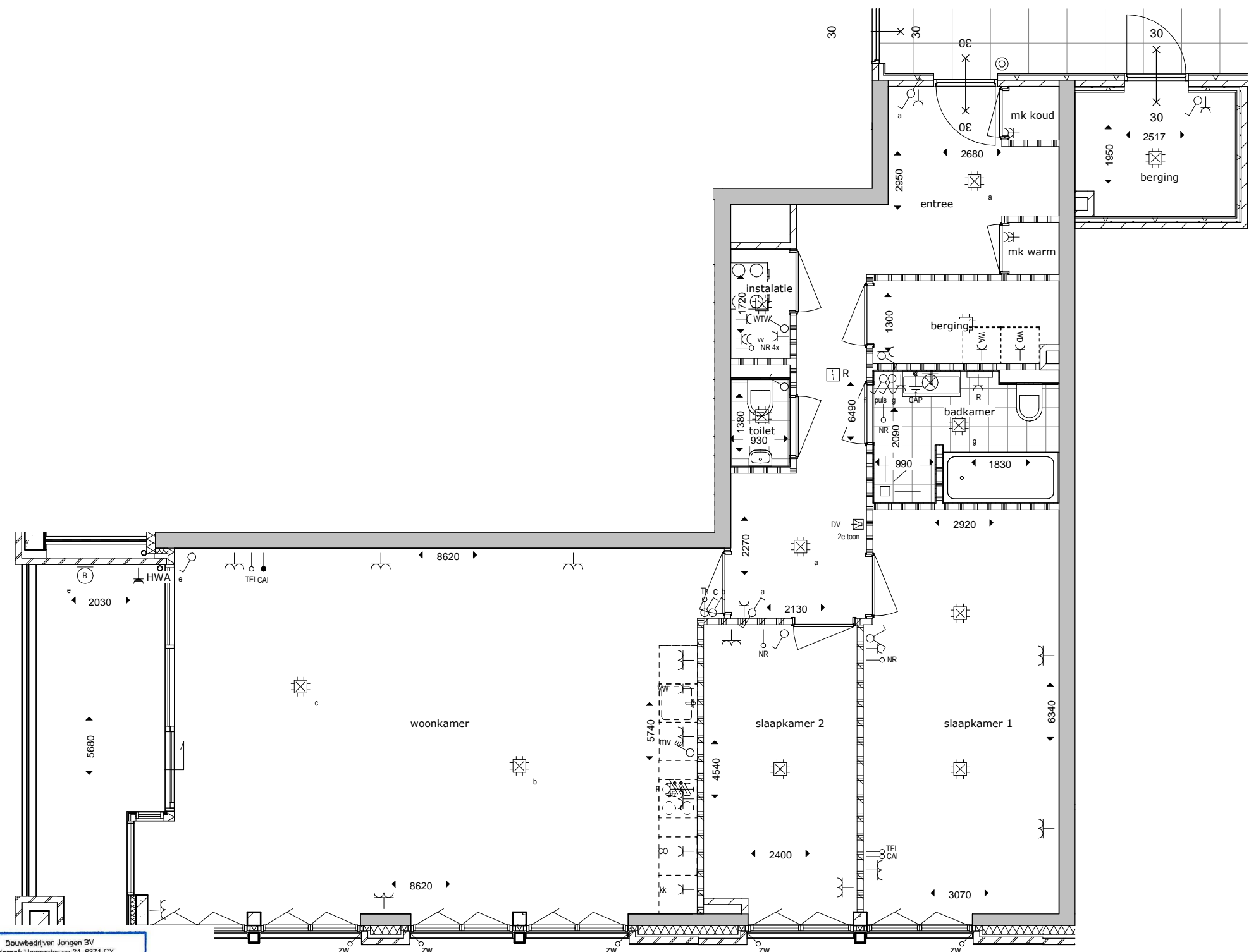
**Appartement Type A**



Bouwbedrijven Jongen BV  
 Landgraaf: Humpertweg 34, 6371 CX  
 Venlo: Noorderpoort 101, 5916 PJ  
 Postbus 31007, 6370 AA LANDGRAAF  
 Telefoon: +31 (0)88 186 12 00  
 www.bouwbedrijvenjongen.nl

**DEFINITIEF  
 VOOR VERKOOP**

Accoord  
 D.D. 12-10-2018



**Koningswinkelstraat 3  
 6301 WH Valkenburg**  
 T +31(0)43 - 601 36 37  
 F +31(0)43 - 601 54 85  
 @ info@paltebv.nl  
 I www.paltebv.nl

**Werk:**  
 Sphinx Zuid Maastricht

**Onderdeel:**  
 Appartement A 1ste,2de,3de verdieping (17/27/37)

**Get. :** T.Moulen  
**Gec. :** D.Loo  
**Goedg.:**

**Projectno.:**  
 470266

**Blad:**  
 B7\_VK023

**Wijziging:**  
 C  
 12-10-2018

**Datum :** 31-08-2018  
**Schaal :** 1 : 75  
**Formaat:** A3